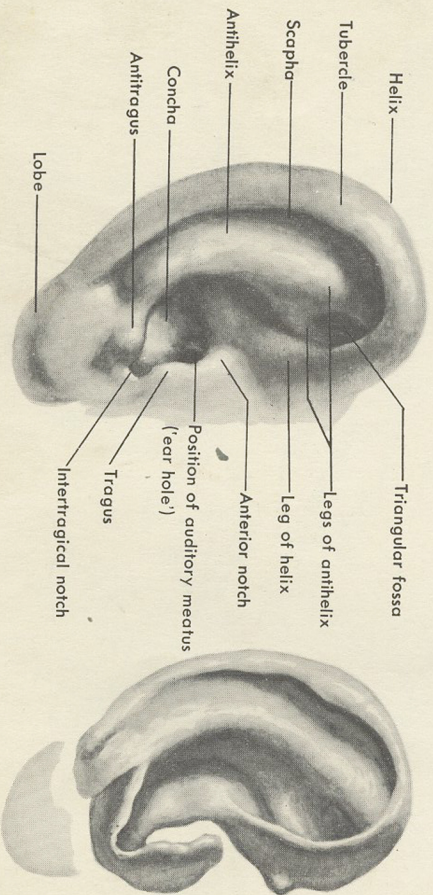
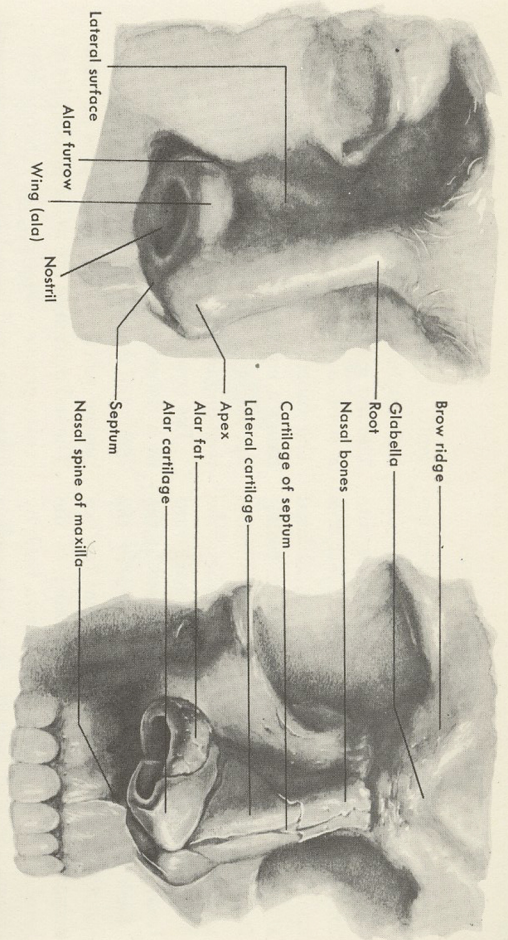
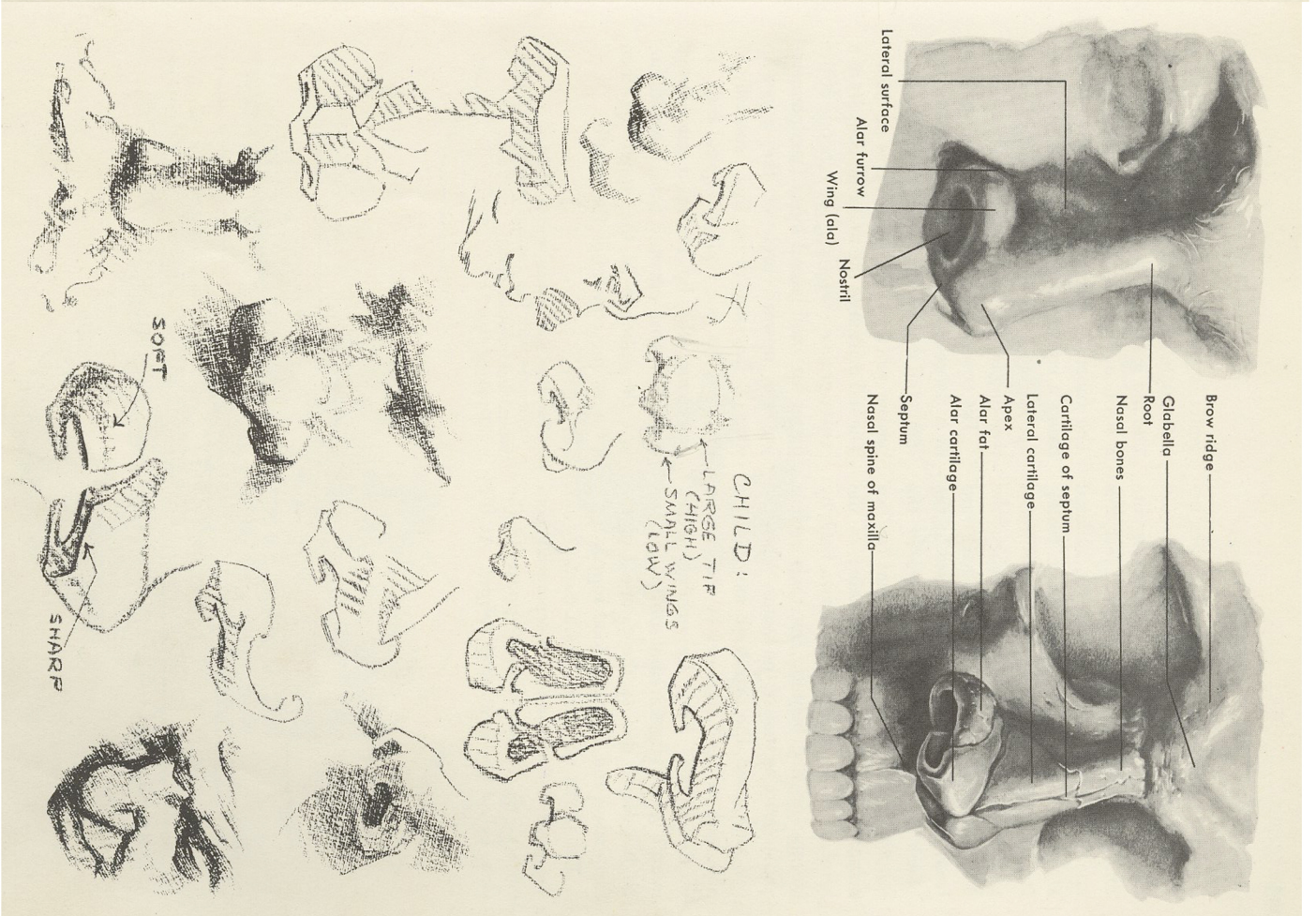
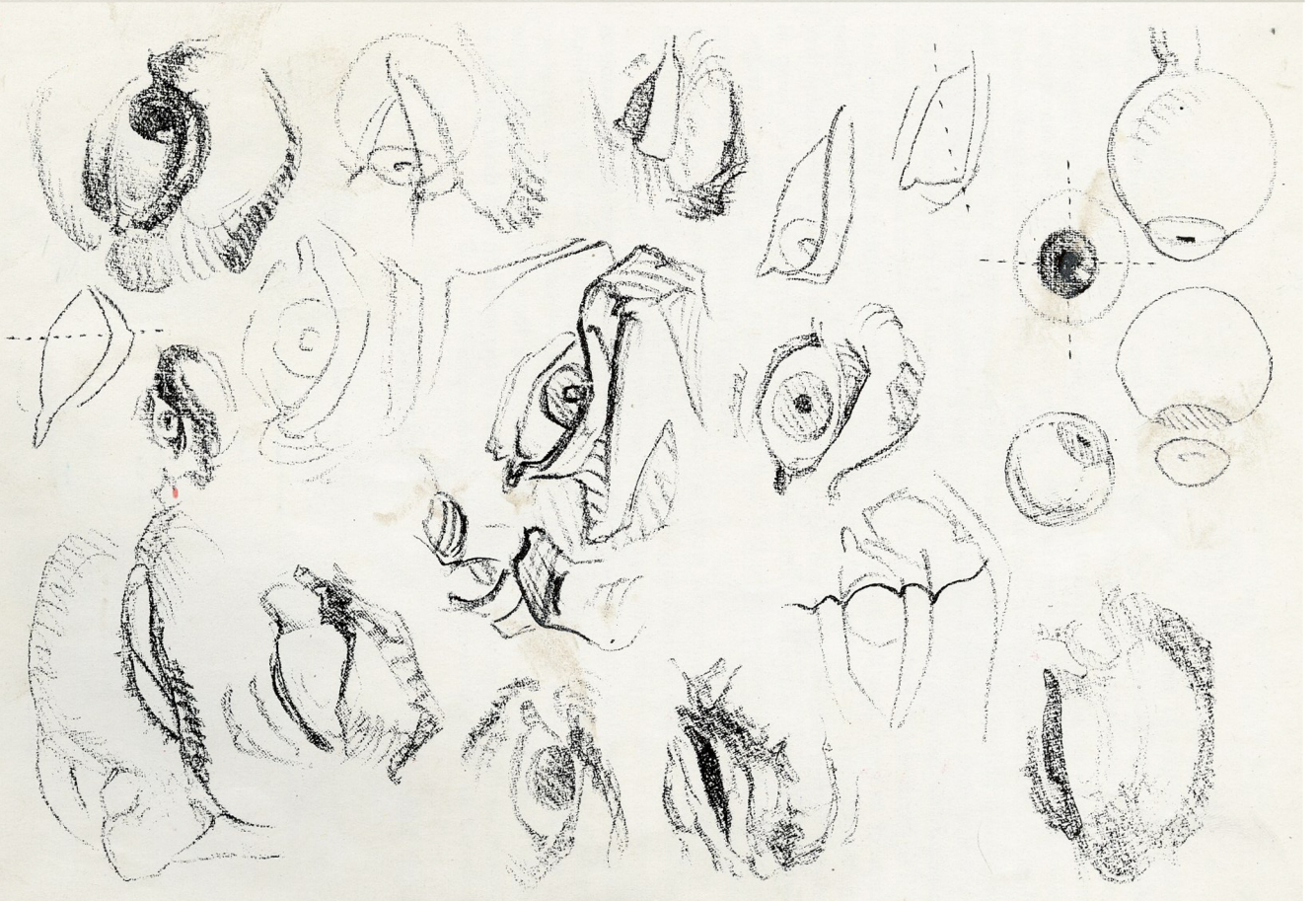
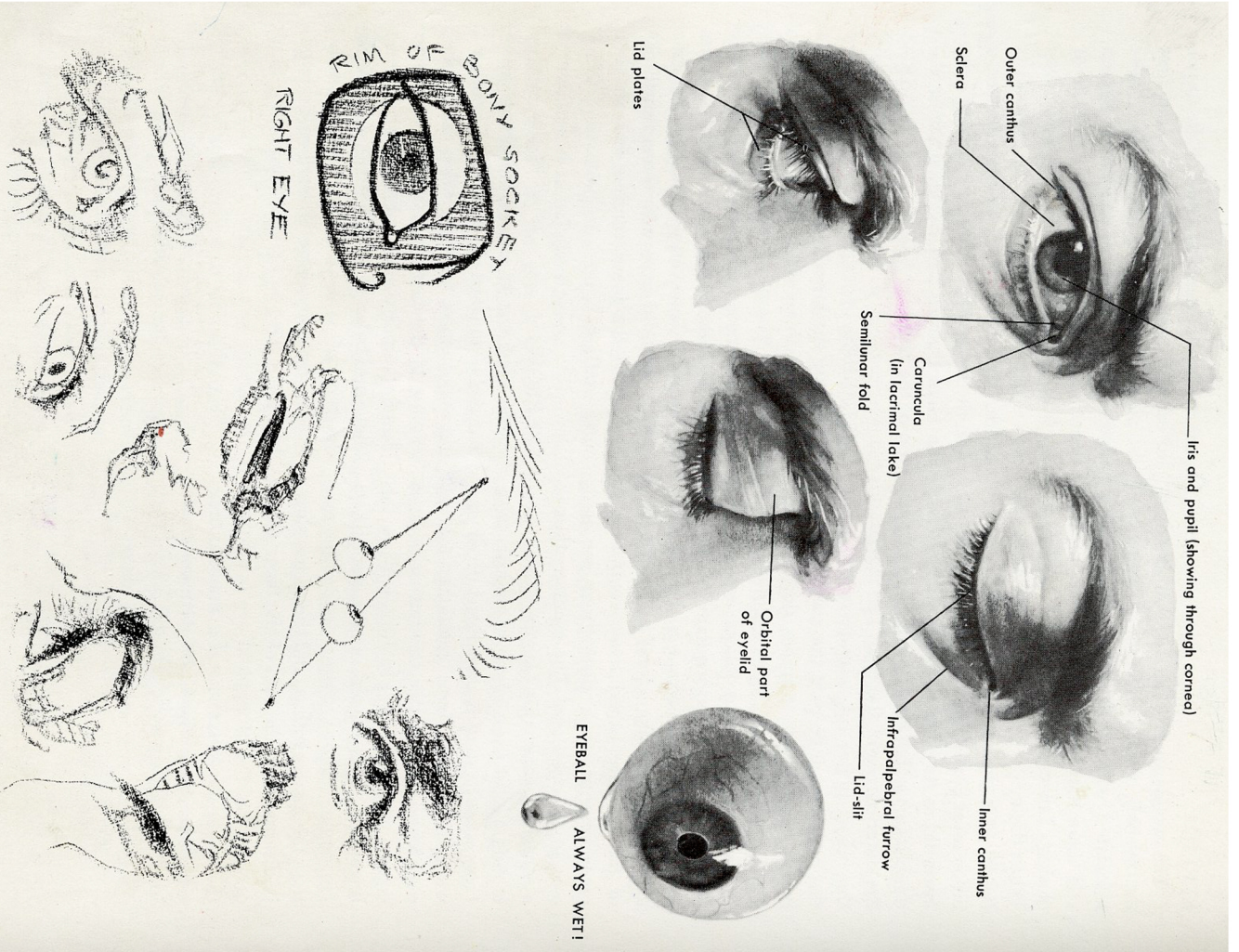


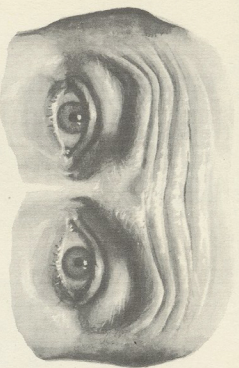
Right EAR

CARTILAGE



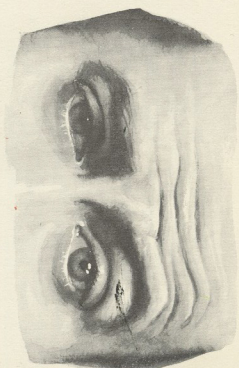






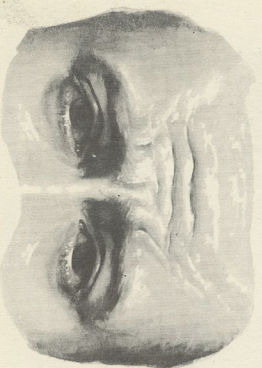
ELEVATION OF EYEBROWS

AGENT: Frontal part of epicanthus.
Long, transverse folds above brows indicate desire to remove obstructions (physical or mental) to clear vision (comprehension).



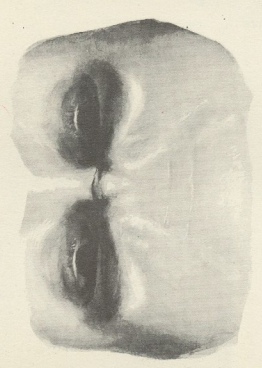
ELEVATION OF ONE EYEBROW

AGENTS: Frontal part of epicanthus (one side), corrugator.
One-sided wrinkling of forehead similar in motivation to raising of both brows but suggests reserve, element of doubt, or attempt to recall.



ELEVATION OF INNER ENDS OF EYEBROWS

AGENTS: Frontal part of epicanthus (center fibers), corrugator.
Vestige of attempt to check crying fit is perceived in T-shaped puckering at center of forehead.



DEPRESSION AND CONTRACTION OF EYEBROWS

AGENTS: Corrugator, procerus, orbicularis oculi.
Encounter of difficulty is usually felt in knitting of eyebrows over nose—effort to follow visually or mentally.

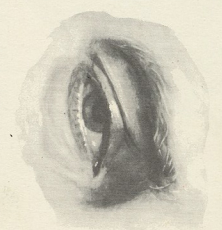
OBSERVATIONS—Brow glides freely up and down, except outer end, which seems to be fixed. Upper eyelid round and full under raised eyebrow; when brow is lowered, it may conceal center part of lid and give angular shape to eye.

Bridge of nose long, narrow, and smooth when eyebrows are raised; widened and creased when they are lowered. Eyes pale and clear when brows rise to admit light; dark and obscure when shaded by lowered brows.



ELEVATION OF UPPER EYELID

AGENT: Levator palpebrae.
Full exposure of iris (color ring) is common response to the unexpected; endeavor to promote clear vision, usually with raised eyebrows.



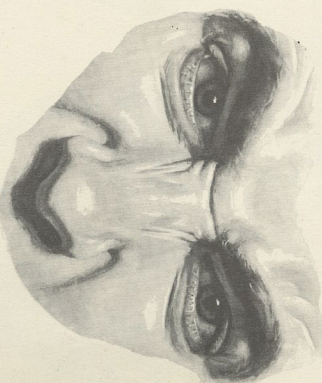
DEPRESSION OF UPPER EYELID

AGENT: Orbicularis oculi.
Drooping eyelids show detachment from environment; combined with raised eyebrows when fighting off sleep.



COMPRESSION OF BOTH EYELIDS

AGENTS: Orbicularis oculi, corrugator, procerus.
Familiar 'crow's feet' wrinkles are pushed up when eyelids squeeze together to shut out bright light or to protect eyeball, as in laughing or crying.

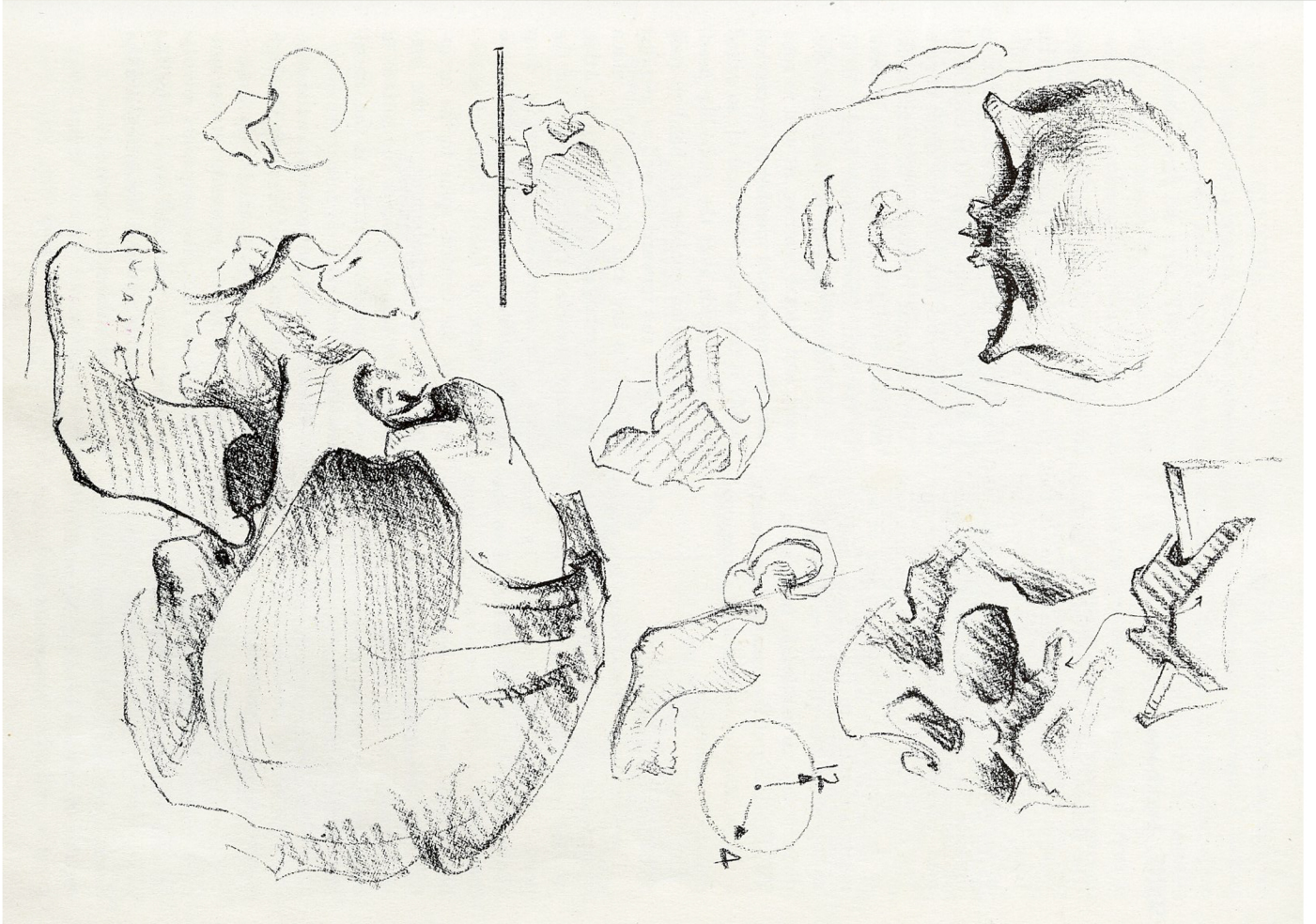
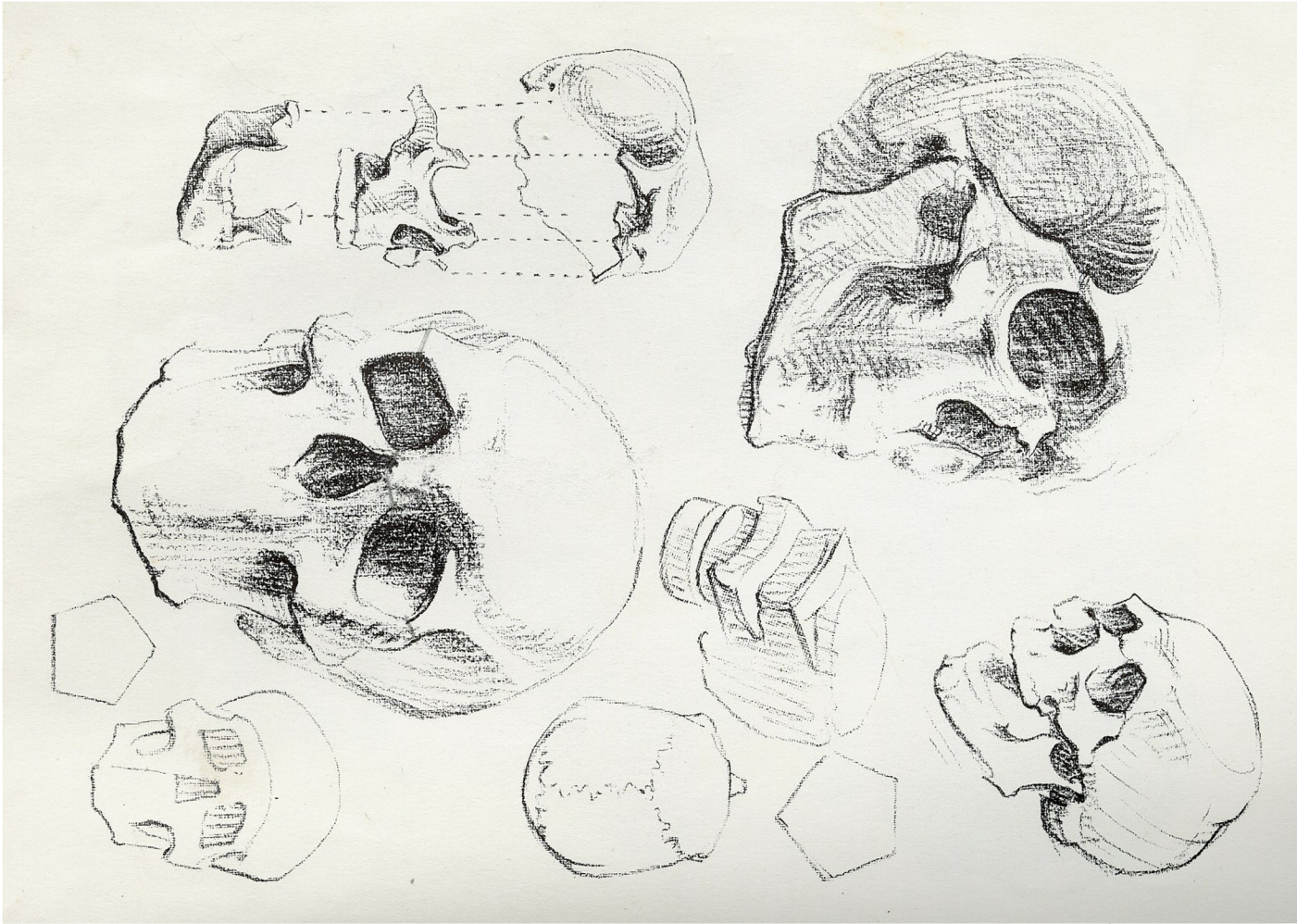


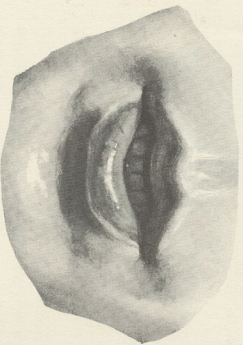
ELEVATION OF WINGS OF NOSE

AGENTS: Quadratus labii superioris (esp. angular head), procerus.
Nose is drawn up into thin sharp ridges, creasing between brows, when face prepares for violent expiration (see p. 245) or when raising upper lip to retch.

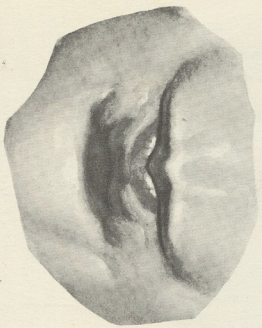
OBSERVATIONS—Expression about eye regulated by degree of exposure of both eyeball and upper lid, and by whatever forms (brow, cheek) may press toward eye. Brow may be drawn upward and inward across outer end of upper eyelid, or may push forcibly downward and inward across

inner end of lid. Movement of lower eyelid negligible. When exposed to strong light, eye is pale and sharply defined, with small pupil. In subdued light, eye becomes dark and soft, with large pupil.

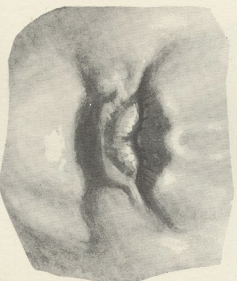




PARTING OF LIPS
 AGENT: Orbicularis oris (relaxing).
 Uncertainty or helplessness is indicated when lips are loosely parted; in contrast to firm closure of determination.



COMPRESSION OF LIPS
 AGENTS: Orbicularis oris, slight use of all other muscles inserting into it.
 Squeezing of lips is a sign of determined restraint.

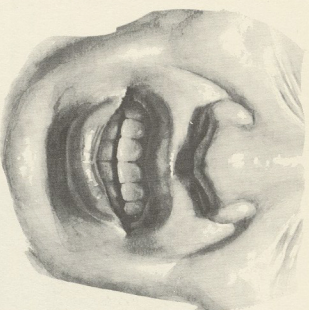


PURSING OF LIPS
 AGENT: Orbicularis oris.
 Apprehension, scheming, or mere disinclination to speak may be betrayed by tightly screwed lips; effort to restrain speech.

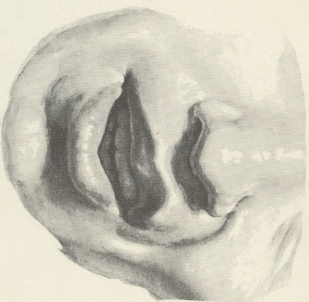
COMPRESSION OF LIPS
 AGENTS: Orbicularis oris, slight use of all other muscles inserting into it.
 Squeezing of lips is a sign of determined restraint.

OBSERVATIONS—Tubercle of upper lip shrivels in compressed lips, predominates in pursed lips. Upper lip remains comparatively smooth when

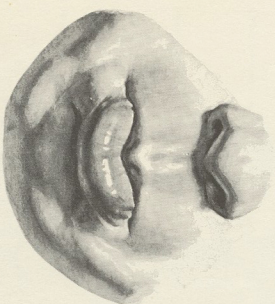
PURSING OF LIPS
 AGENT: Orbicularis oris.
 Apprehension, scheming, or mere disinclination to speak may be betrayed by tightly screwed lips; effort to restrain speech.



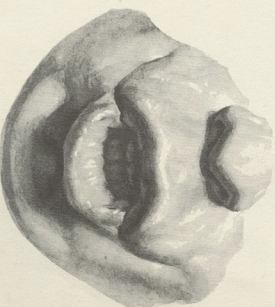
ELEVATION OF UPPER LIP
 AGENT: Quadratus labii superioris (esp. angular head).
 Raising of upper lip follows perception of something offensive, indicates that retching is induced.



CURLING OF UPPER LIP
 AGENTS: Quadratus labii superioris (esp. infraorbital and zygomatic heads), zygomaticus.
 A snarl presages the fight, defiantly lifting one side of upper lip to display canine tooth—dangerous weapon of Man's progenitors.



EVERSION OF LOWER LIP
 AGENTS: Quadratus labii inferioris, mentalis, orbicularis oris.
 Rolling out of lower lip is associated with real or pretended seriousness and with partly inhibited feelings of grief.



PROTRUSION OF BOTH LIPS
 AGENTS: Orbicularis oris, mentalis.
 Related to the making of appropriate sound, this shape of mouth may be cue to state of enraged rancor.

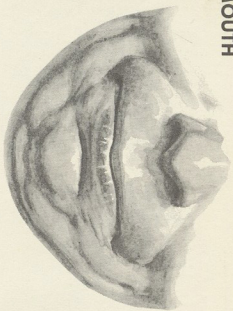
PROTRUSION OF BOTH LIPS
 AGENTS: Orbicularis oris, mentalis.
 Related to the making of appropriate sound, this shape of mouth may be cue to state of enraged rancor.

OBSERVATIONS—Nasolabial furrow and creases below eyelid sharp when pushed up by upper lip. Mentolabial furrow sharp under pressure of lower lip; accentuates rounded pillars from jaw to lower lip. Nasrils expand with sharp naso-

OBSERVATIONS—Nasolabial furrow and creases below eyelid sharp when pushed up by upper lip. Mentolabial furrow sharp under pressure of lower lip; accentuates rounded pillars from jaw to lower lip. Nasrils expand with sharp naso-

OBSERVATIONS—Nasolabial furrow and creases below eyelid sharp when pushed up by upper lip. Mentolabial furrow sharp under pressure of lower lip; accentuates rounded pillars from jaw to lower lip. Nasrils expand with sharp naso-

OBSERVATIONS—Nasolabial furrow and creases below eyelid sharp when pushed up by upper lip. Mentolabial furrow sharp under pressure of lower lip; accentuates rounded pillars from jaw to lower lip. Nasrils expand with sharp naso-



RETRACTION OF CORNERS OF MOUTH

AGENTS: Buccinator, risorius, triangulatis, platysma.
A closed mouth drawn against teeth insures holding of breath for physical effort, often restraint of speech; suggests resolve or firmness of mind.



ELEVATION OF CORNERS OF MOUTH

AGENTS: Zygomaticus, quadratus labii superioris (esp. zygomatic head), caninus.
The V-shaped smile raises lower face, generally to signify an agreeable frame of mind; antithesis of distressed mouth.

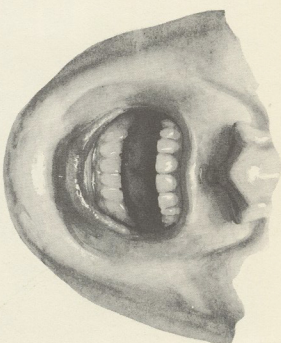


DEPRESSION OF CORNERS OF MOUTH

AGENTS: Triangularis, platysma, quadratus labii inferioris, mentalis.
A drooping mouth tells of encountering some obstacle or unpleasantness; a vestige of preparation for screaming.

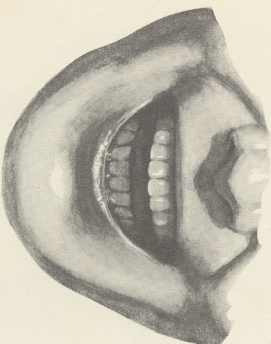
252
OBSERVATIONS—Chin puckered, resembles small pillow. Conspicuous folds and dimples accompany movement of closed mouth. Pillars arise from fullness of cheeks and join below mouth, appearing as continuous cord. Smiling

mouth shows 'cord' as if caught under pillow of chin—taut lines accentuating V pattern. Drooping mouth has cord lying above chin and hooked under corners of mouth.



OPENING OF MOUTH

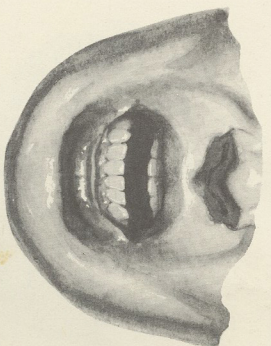
AGENTS: [jaw depression] digastric (anterior belly), mylohyoid, [lip retraction] all muscles inserting into orbicularis oris (which contracts only enough to govern shape of aperture).
In astonishment or when vocalizing or yawning, mouth gapes wide—heart-shaped—to draw deep breath more quickly.



UPWARD RETRACTION OF OPEN MOUTH

AGENTS: Buccinator, risorius, zygomaticus, quadratus labii superioris, caninus.
If frame of mind is agreeable, mouth may be opened and raised into a semicircle; preparation for uttering laughter—antithesis of distress call.

OBSERVATIONS—Lower teeth seldom conspicuous except in feelings of acersion. Nostrils tend to rise and dilate when upper lip is raised, to glide down and compress when lip is lowered.



DOWNWARD RETRACTION OF OPEN MOUTH

AGENTS: Buccinator, risorius, triangulatis, quadratus labii inferioris, platysma, mentalis.
Mouth opens downward and becomes angular, with straight, everted lips to prepare for sounds of screaming.

Upper cheek well defined only when corners of mouth are raised. Form of chin comparatively smooth when mouth is opened.